



# Y SCHOOL

A better future for everyone.

*We believe in the power of  
inspired young people.*

# The Y

## About us

### Here at the Y:



We believe in the power of young people.



We believe all young people are capable of success.



We believe in providing every young person the opportunity to be healthy, happy, and connected.

At a time, where school retention and completion rates are falling and more young people than ever before are becoming disengaged from traditional education settings, there is a need for alternatives that can better provide for and support the social and emotional needs of those young people who are at greatest risk of falling out of education all together.

The Y recognises the importance of providing the right learning environment to improve social, educational and employment outcomes for young people, in particular, those who have experienced challenges effectively engaging in education or training. As a nationally federated organisation, the Y has established vocational schools across Queensland, Western Australia and now Victoria.

**The Y is looking to expand on its existing youth programs and services in Victoria through establishing Y Schools and is seeking partners to support our aspirations, providing meaningful and practical opportunities to positively impact the lives of young people in our community.**



# The school

# About Y Schools

The Y Schools offer a school re-engagement program that helps students who find it difficult to thrive in the mainstream education system.

The Y School model is based on establishing secondary school campuses for up to 120 students, with an initial first campus being Years 10-12. The school will operate smaller class sizes and bring together educators, youth workers and counselors to create a safe and positive environment that draws out students' strengths and empowers them to create a better future for themselves. To support pathways to further training and / or employment the school will offer foundation and vocational senior secondary certificates and as part of this students will be able to access Vocational training at certificate I, II & III as well as work experience and employment connections such as apprenticeships and traineeships.

The students the school will support will mostly have been disengaged from mainstream education, with many having faced dysfunction, disadvantage and/or trauma.

To support these students the school will adopt a 'THRIVE' framework which takes an evidence-based approach to supporting academic achievement, wellbeing, and transition to employment. Most importantly, the school is a partnership, with students having a voice in shaping their own development.

To find out more about our Vocational School approach and structure see here.



## The students most likely to experience significant disengagement and benefit from the environment we provide include young people who:

- Have a disability or additional learning needs.
- Mental health conditions including but not limited to anxiety.
- Been exposed to trauma, including abuse and / or neglect, or witnessing family violence.
- Experienced homelessness
- Identify as Aboriginal or Torres Strait Islander.
- Identify as LGBTIQ+ or are exploring their gender identity.
- Been in contact with the justice system.
- Reside in Out of Home Care.
- Current or past issues with drug and/or alcohol use and dependence.
- Have experienced bullying or harassment.

# The school: Our program

Built on the pillars of wellbeing, academic growth, and vocational opportunity the Y program is built on evidence, experience, and the learnings of our fellow Y Schools across the country.

## A student led experience

All students at the start of their time at the school are interviewed and their interests, strengths and barriers identified to create their student profile. Each student works with school staff to develop an individual learning plan. Within the qualifications offered at the school, they can choose areas of learning they are interested in and that leads to a positive future.



## Body, Mind and Spirit

The Y School's Body, Mind & Spirit program is a holistic approach to integrating all aspects of a young person's development. The program has a strong focus on the Y values of caring, honesty, respect and responsibility. Social, emotional, physical and spiritual wellbeing are taught in a manner that builds each student's sense of belonging and connectedness. This promotes a healthy growth mindset which enables our students to thrive. Students participate in lessons based on our Thrive Pathways Framework. This supports students to develop conflict resolution skills, grow in their understanding of mental health and wellbeing, drug and alcohol education and, relationship building. The lessons, facilitated by school staff and external agencies, provide students with the opportunity to learn about social considerations and practice skills that will enhance their wellbeing.



## Victorian Pathways Certificate (VPC)

The recently developed Victorian Pathways Certificate (VPC) provides an entry point back into education for students at year 10 and above who have had disruptions or significant gaps in their learning. The course develops foundation skills in literacy, numeracy, workplace skills and personal development through applied learning. It includes opportunities for vocational course offerings and workplace learning, preparing students for further education and employment.





# The school: Our program

## VCE Vocational Major (VCE CM)

The VCE Vocational Major offers a pathway for students to attain their VCE with a vocational focus. Students at years 10, 11 & 12 who have the required foundation skill base and motivation on entering the school can enrol directly into the VCE VM.

Otherwise students who have completed the VPC and wish to continue their studies can continue on into the VCE VM. This

VCE qualification includes literacy, numeracy, workplace skills, personal development and a certificate 2 level (or above) Vocational Education qualification.

Students who complete the VCEVM are able to progress to further education or into the workplace with a solid skill base and completed VCE certificate enabling a range of options.



## Vocational Education & Training (VET)

The school will partner with registered training organisations to give students access to accredited and pre accredited training areas of interest. Students working towards the VPC can gain credit for certificate 1 level training and vocational short courses. Students in the VCEVM can gain credit towards their qualification through certificate II or III courses available through the VET In Schools arrangements.



## Industry Exposure

Preparing for and engaging our young people within industry is a priority. We believe the more exposure students get to the world of work, the more prepared they are to participate in employment opportunities. Both the VPC and VCE VM allow students to gain credit for Structured Workplace Learning.



# The Y aspiration

## A brighter future for everyone

Y Schools exist to provide disengaged students with a better experience in education through providing a **quality education program, in an environment that meets the needs of students and creates more opportunities for them to thrive.**

A school environment that is welcoming and focuses on **Belonging**.



- Giving young people a place where they feel welcomed and belong is often a critical first step to reengagement.
- Recognising that young people are individuals and school should be able to flex to the needs of each student.
- Building the sense of belonging as part of the school community and growing that into belonging in the whole community.

A school program that supports **Academic Growth**.



- Curriculum and programs built on evidence, experience, and knowledge of teachers, young people, and their families.
- Increased learning support.
- Learning approaches and styles adapted to the student's environment.

A school program that focuses on **Wellbeing**.



- Wellbeing is recognised as an essential condition for learning.
- Creating safe, predictable, and supportive learning environments.
- Counselling, support, and social and emotional intervention to meet the needs of students.

A school program that is **Vocational**.



- Vocational courses and training that connect to employment readiness and opportunities.
- Career counselling and guidance that support students on their journey to employment.
- Exposure to industry and employers through Y partnerships and connection in the community.



# The Y aspiration

## A vision for change

The Y embarked on this journey with the aspiration of a better future for every young person disengaged from mainstream education, taking action through:

- Providing a **safe and nurturing environment**, where disengaged young people are able to receive the support they need to re-engage with learning and have a positive school experience. Supporting them to develop key skills in literacy and numeracy, attain vocational outcomes, and provide more opportunities to transition to further education, training, or employment.
- Providing those young people facing the greatest challenges with the **right school experience through a quality education program** in an environment that provides for their health, safety, wellbeing, and personal growth.
- Delivering an **educational model that effectively supports students and families** who have experienced adversity and/or trauma; and staff, who are responding to the complex and diverse needs of young people every day in our schools.
- Promoting **transformative relationships**, not only for students, but also for school leaders, teachers and other staff working with young people and their families. Enabling long-term, sustainable, and cultural change for everyone in our Schools.





# The opportunity Y School?

The Y is a global, community not-for-profit organisation, that exists to empower and support young people to reach their potential.

## The Y brings:



A purpose driven organisation and culture that believes in the power of young people and the importance of learning and creating pathways to future opportunities;



An alternative educational model that provides a flexible individualised learning environment, to maximise outcomes for every young person;



The practical experience and learnings from launching over 14 schools across Australia;



A national reach and connection to young people through our 'Y' associations across the country, which collectively reaches over 5 million young people through youth specific programs, camps, and children's services; and



A trusted national brand with connection to government, community, and local businesses.



# The opportunity

## Investing in the future of young people.

Nearly 12,000 young people in Victoria refuse to go to school. While the reasons behind this will be diverse and often complex, the reality is that there are few alternatives to mainstream education. A challenge the Y are committed to addressing, a challenge that needs the support of partners to address it.

### A complex problem that needs investment.

While the number of Victorian independent alternative educational schools catering for young people disengaged from mainstream education has doubled in number since 2014 (from 48 to 93), there remains a lack of places to meet the demand. A clear need exists here in Victoria to identify, build, and establish alternative educational schools to support disengaged, and often vulnerable, young people to re-engage in education and thrive.

### A proven and trusted organisation that knows how to build strong partnerships and get best value out of every dollar.

The legacy, experience, culture of the Y in Australia provides the foundations for a trusted partnership and impactful investment vehicle. The Y have the knowledge, resources and reach to deliver future success in this program and create demonstrable impact in the lives of young people through the Y Schools program.

### A partnership opportunity that aligns to your social procurement and corporate social responsibility (CSR) commitments.

The opportunity to partner in addressing a problem and investing in a solution that can demonstrate your organisations commitment to generate social, economic, and environmental value that benefits the wider community, especially those young people facing the greatest challenges.



<sup>1</sup> Victorian Government. (2023). Senate Education and Employment Committee, School Refusal Inquiry. Submission 25. Parliament of Australia, Submissions. [https://www.aph.gov.au/sitecore/content/Home/Parliamentary\\_Business/Committees/Senate/Education\\_and\\_Employment/SchoolRefusal/Submissions](https://www.aph.gov.au/sitecore/content/Home/Parliamentary_Business/Committees/Senate/Education_and_Employment/SchoolRefusal/Submissions)

<sup>2</sup> Independent Schools Australia; <https://isa.edu.au/our-sector/diversity/special-assistance-schools/>; accessed March 2023

# The opportunity

## Partnership with the Y

As the Y seeks to establish its first Schools in Victoria, starting in the northern corridor of Melbourne (in the Y Whittlesea service area), there is an opportunity to partner with the Y in a variety of ways to support young people disengaged from mainstream education and empower them to reach their full potential.

The Y has a vision to create a network of school campuses providing for students from years 7 – 12 across a wide area where the need and conditions exist to enable and facilitate these.

### Infrastructure and school facility development

The Y is working with developers and local Council within the Y Whittlesea area to identify potential sites for Y Schools for future locations. The investment required in adapting either existing spaces or developing our own is significant, with the Y looking for development partners to provide support for this critical part of the program.

### Financial support

From sponsoring school programs to funding and/or providing educational materials through to helping to finance the building of the entire school, there are a range of financial support opportunities for all types of funding support.

### In-kind partnerships

Running a school requires a diverse range of resources, from educators through to the student management systems. Establishing partnerships that could support the various skills and resources we need to run the school through either in-kind or low-cost terms would add a significant value and cost saving.

### No / Low interest loan

The Y recognise the need for investment is critical to the success of the Y Schools program. To support this, the Y would be interested in the opportunity to access impact investment funding. Connecting to those partners who have the capacity to provide a loan based on both financial and social returns. In this approach, the Y seek to explore different loan terms that can provide access to required capital and align to viable social and / or commercial returns within the school model.

---

Through partnering with the Y, you will be part of our rich history and legacy, as well as be at the start of a new approach to alternative education here in Victoria, positively impacting the lives and futures of hundreds of young people in our community.

To find out more about how you could support Y Schools please scan here.





# The opportunity

## The value in working together.

The Y recognise that in partnership there is shared value and outcomes and multiple ways in which the partnership can create mutual benefits. Depending on the partnership type, there a range of opportunities and approaches in how the Y will recognise your role.

### School connection and visits.

We invite all our partners to visit and see our sites and the work we are doing with young people in the community firsthand. We will seek to readily accommodate opportunities to engage and connect with our students' providing opportunities for them as well as your staff.

### Marketing and communication materials.

We commit to providing a range of media and resources that can be offered to you and your stakeholders to help share the work the Y are doing and the impact of supporting and empowering disengaged young people.

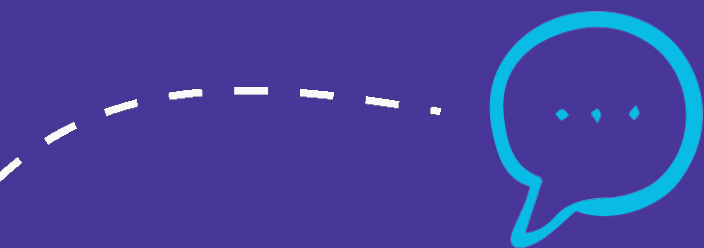
### Naming and branding within the project.

Depending on the nature of the partnership there would be opportunities to provide brand and logo recognition on either the website or in relevant school materials, as well as the potential of infrastructure naming association.

### Social procurement and Corporate Social Responsibility alignment.

Social procurement is about building social, economic, and environmental sustainability into your supply chain and purchasing decisions to drive social and environmental value for community.

Corporate social responsibility (CSR) is about your organisations commitment to be socially, environmental responsible to your staff, stakeholders, and the broader community.



Through the Y partnership there are opportunities to align your contribution and investment to your social procurement and CSR practice, from development of school sites to contribution of materials for school operations to the provision of skilled resources and pathways to support and enable students.



🖱️ [whittlesea.ymca.org.au](http://whittlesea.ymca.org.au)

☎️ (03) 9407 6200

✉️ [contact@ywhittlesea.org.au](mailto:contact@ywhittlesea.org.au)

📍 PO Box 375, South Morang 3752